

# Motueka Valley Association Newsletter

the river, the land, the people

APRIL 2020



## The Health of Our River (2)

Following on from last month's article about the E.coli spikes at the two swimming sites which are monitored in the Motueka River, this article continues looking at the health of the river in general across the catchment.

The total area of the Motueka River catchment, from its headwaters at Red Hill in the south eastern part of the catchment to Tasman Bay is 2170 km<sup>2</sup>. The river itself flows 116km to Tasman Bay, being joined by the major tributaries of the Motupiko, the Wangapeka, the West Bank rivers - the Baton, Pearce, Graham Rivers and other smaller tributaries along its way. The catchment extends offshore for more than 400 km<sup>2</sup> of Tasman Bay. 62% of the freshwater that flows into Tasman Bay comes from the Motueka River.

Trevor James, Resource Scientist at Tasman District Council said that the good health of the Motueka River "is helped by a lot of native bush in the headwaters of the river. The Wangapeka is a major catchment which brings

— continued on third page >

## MVA MEETING

**Please note:** There will be no MVA meetings until further notice.

We'll let you know when meetings will resume via the newsletter and the 'Motueka Valley Community' and 'Motueka Valley Residents' Facebook pages.

In the meantime, the Facebook pages are a great way to stay in touch and share information.

## New Facebook group for valley residents

In 2016 the MVA committee supported setting up a Facebook group for the Motueka Valley.

This closed group, Motueka Valley Community, grew steadily over the four years and now has a membership of 1,700+. Many of the members do not live in the valley, but have the valley at heart (e.g. they know someone who lives in the valley, they live in Nelson or Motueka or are travellers who are staying in the valley temporarily). This platform has enabled the sharing of information about road closures, lost dogs, cattle on the road, surplus fruit, sale of all kinds of items and more.

During the first days of lockdown, I set up a new group, solely for residents of the valley and its tributaries. This came out of a wish for a more intimate group.

The group, **Motueka Valley Residents**, is private, which means only members can see who is in the group and what they post. The purpose was established as being "a group of caring people from the Motueka Valley area, who can check-in, ask for support, provide support, suggest ways of getting through, cheer each other up, listen, send virtual hugs, create stories, share recommendations for books or tv."

If you are keen to join, search for Motueka Valley Residents on FB, answer a few questions to show that you are truly a local :-)) and you will be added as a member. As of 31 March the group has 156 members.

*-Irma Jager, administrator  
Motueka Valley Residents FB group*



We have been directed to close the school, including the swimming pool and the playground. In fact, the entire school grounds are closed. Please stay at home, as by self-isolating the hope is that NZ will be able to contain this dreadful virus. If you think of any ways that we as a school community could support any of you in our wider community, please let me know. Email [principal@ngatimoti.school.nz](mailto:principal@ngatimoti.school.nz) or phone 027 5268842. Let's make the most of being a great community and work through this together, albeit it from a distance!

Because of Covid19 we were forced to cancel two class camps to Marahau and Bark Bay, as well as the Senior class sailing trips. We hope to reschedule these activities for Term 4.

Swimming Pool. Thank you for supporting our school swimming pool once again this season. Key holders; Pool keys can be returned for a \$10 refund once the school office reopens.

Our Room 3 & 4 building project is now finished internally! We have redesigned the spaces and are happy to say they are working well. It will be great to have a new fireplace installed during the Easter holidays. In the future we plan to build decks and verandas outside this block of rooms too.

Blueberries, swimming, triathlon and MoTec; many students have enjoyed some fantastic summer learning this term. Next term we look forward to Matariki, insect and ecosystem studies, Life Education and a show from NZ Playhouse called "Chilled".



*Our junior camp at Quinney's Bush this year. We are very fortunate to have such excellent parent support for our camps!*



## MVA Committee update

From the March MVA meeting:

- **TDC Long Term Plan early engagement:** Council staff are not attending the community feedback meetings now and councillors are to attend if they can. Council is still seeking feedback at those meetings, online or hard copy. MVA is to hold this as part of the next monthly meeting. The focus is more on strategic priorities. Important is also to get projects in the LTP, e.g. river controls, road works. Feedback is due by 17 April. A feedback document is going to households next week. Advertise this in April newsletter.
- **MacLeans Picnic Area:** A letter has been sent to Council requesting the status of the McLean's Reserve be changed from road reserve to recreational reserve.
- **Responsible Camping draft strategy:** Council is considering the draft strategy and will make a decision in the next 4-6 weeks. The existing bylaw may need to be updated to implement the strategy.

## ST. JAMES CHURCH NGATIMOTI



**We advise that all Church Services have been suspended until further notice. As an alternative, our Vicar has set up a YouTube channel. You can follow videos by visiting YouTube & type in MotAnglican in the YouTube search box.**

**Our AGM previously set for 7<sup>th</sup> April is also suspended until further notice.**

**There will be no ANZAC service this year.**

**In the meantime, stay safe at home, look out for your neighbours, but keep your distances & do your best to keep positive.**

**Philippians Chapter 4 v 13**



— continued from front page >

in some very clean, clear water as do a lot of the West Bank catchments - the Baton, the Pearse, and the Graham. The gorge in the headwaters of the Motueka River has some of the best and clearest water in the country. It's the smaller waterways dominated by pastoral land-use, lowland environments and urban environments that are the least healthy."

The two urban creeks – the Thorp and the Woodlands by the Recreation centre - are technically considered as part of the total catchment. "They are usually referred to as drains, but they originate from Motueka River, float underground then pop out as springs and flow out to the Moutere Inlet. They have some issues, problems with nitrates, dissolved oxygen and temperature. Being in an urban area, they are always going to be up against it and have problems," Trevor said.

There are 4 sites along the Motueka River's route where its flow is recorded - at Woodman, Alexander Bluff Bridge, Woodstock and Gorge headwaters, and there are 7 sites which are monitored monthly for water quality - 4 upland and 3 lowland sites. At these sites the water is sampled for E.coli, nitrogen, phosphorous, clarity and turbidity and results are recorded on the Land, Air, Water Aotearoa website ([www.lawa.org.nz/explore-data/tasman-region/river-quality/motueka-river/](http://www.lawa.org.nz/explore-data/tasman-region/river-quality/motueka-river/)).

Trevor said, "I've been writing detailed reports for the last 16 years and over that time there have been little changes on a catchment level. It's surprising that at a catchment scale it hasn't changed all that much. Every 5 years we do a very detailed report on all the catchments in our region. The last one was in 2015 and is still pretty valid." The next report won't be available until 2022 as the frequency of sampling was increased from quarterly to monthly and changed to all-weather sampling in July 2016.

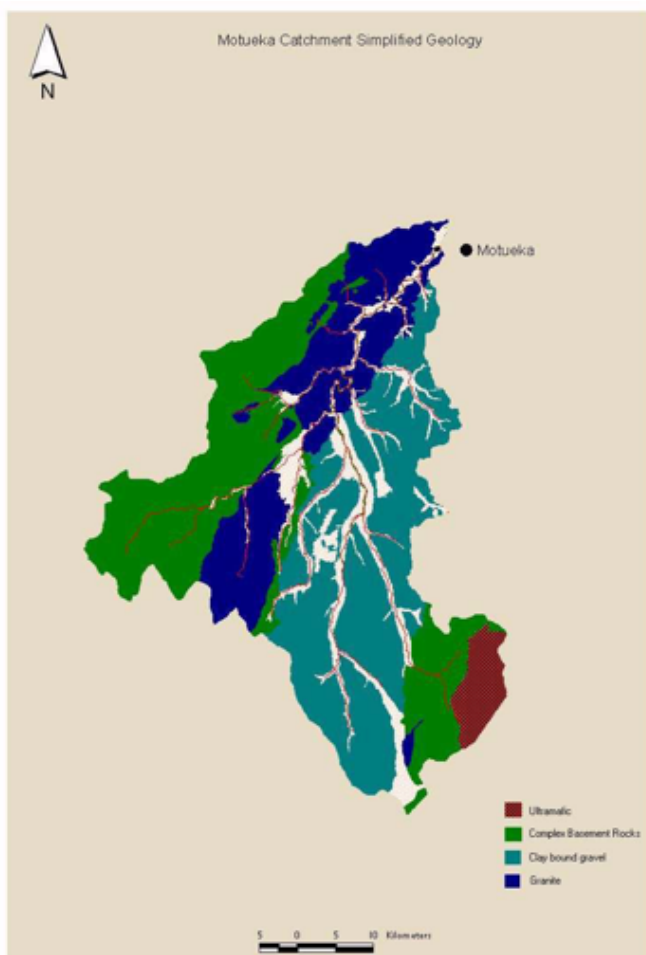


In terms of maintaining the health of the river, Trevor said, "Habitat is the big thing. You can sum up the health of river habitat in one keyword – variety. A river needs a variety of depth, of width; a variety of substrate, of bank shape, trees and flooding onto its floodplain. On the Motupiko we have had a few battles with our river engineers who had put a lot of rock in the river. But they are now being a lot more ecologically sensitive. Rather than building rock walls (rock revetments), which allow the floodwater to pass through in a very uniform way moving very fast down to the sea and the water depth is very even all the way through (there's no localised scour areas which create pools), they are using groins. These are so much better than rock walls, as groins create pools and there is a variety of depth in a waterway. It's really important especially if you've got trees planted on top of the groins providing shade. They provide really good habitat for eels and trout." Fish & Game NZ have been working with TDC river engineers to get more groins in the river.

Another area of concern for river health is toxic algae. Trevor said, "There are low levels of toxic algae in parts of the Motueka catchment - in the lower Motupiko, the Sherry and other areas, but they are not swimming sites and it's not a widespread problem. All the farmers are aware of the issue of nitrogen fertilisers causing toxic algae. We are keeping a good look-out for it and we stress to people if they are at all concerned we recommend to send in a good quality photo of the algae as it is easy to identify - lift the stone out of the water with the algae on it, take a photo and send it into us."

Next month more on the health of the Motueka river.

-Fiona Nelson, reporter



### Location of AEDs in Motueka Valley

- **Woodstock Automotive (Kerry Hall)**  
982 Dovedale Road, Woodstock Junction.
- **Ngatimoti Community Rooms/Fire Station**  
Motueka Valley Highway next to Ngatimoti School
- **Pokororo Hall**  
West Bank Road at corner of Graham Valley Road



Motueka Valley Defibrillator Group is a registered charity (CC50792). Donations towards the maintenance of the AEDs can be made to: Motueka Valley Defibrillator Group, NBS acc # 03-1354-0474291-00 or contact Gloria Anderson, chairperson, on 526 8644 for more information.

## Bruce Geddes

The Motueka community has lost a loving and caring man who will be missed by all. Auckland born in 1960 and in 1993 he made his way to the Graham Valley where he started to forge his life. He was a man of many skills which brought him into contact with his surrounding neighbours helping with hay cutting and also advising on sustainable power options.

He met Sylvia in 2003 and in 2011 there was a shift in their friendship and as a consequence a new and exciting journey began for him. They married in 2018 and never looked back. There is no doubt they became an incredible team, sharing their passion for nature, animals, food, friends and dancing. Because of the love he shared with Sylvia it radiated outward to all that he came in contact with.

Bruce was creative, hardworking and a handyman extraordinaire. He was without a doubt, loving, caring, honest, trustworthy and he saw the best in others. He was always prepared to hold out his hand to help and his laughter was the natural sort that came from his joy of life. He loved people and the various parts of his life that they came from. He was always a welcoming host, especially gathering people around his self-built pizza oven and feeding them his special dishes.

Bruce had a keen interest in history, mainly the goldfields in New Zealand, blacksmithing, and power, especially solar and hydro. He started his business, Power On, 25 years ago putting solar modules on roofs throughout New Zealand and installing micro-hydro systems.

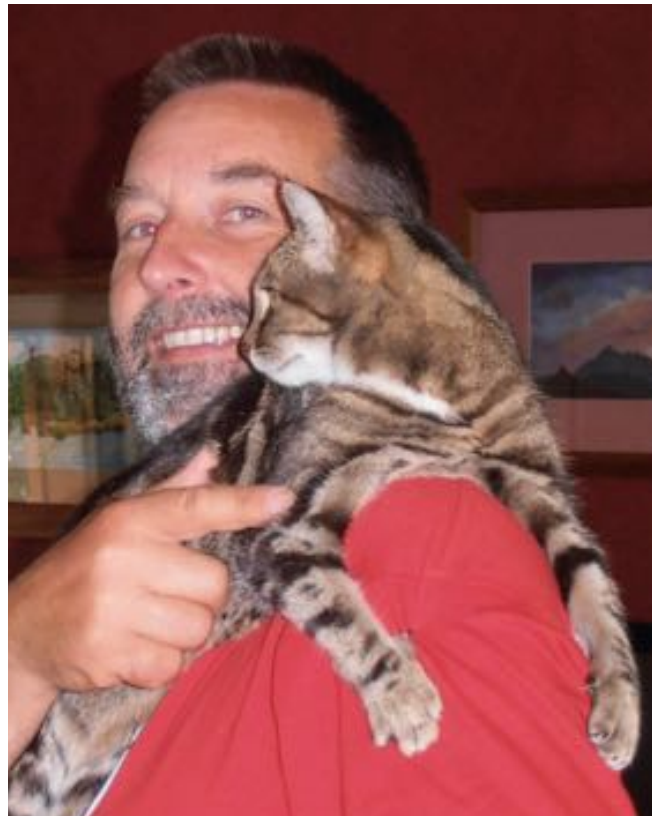
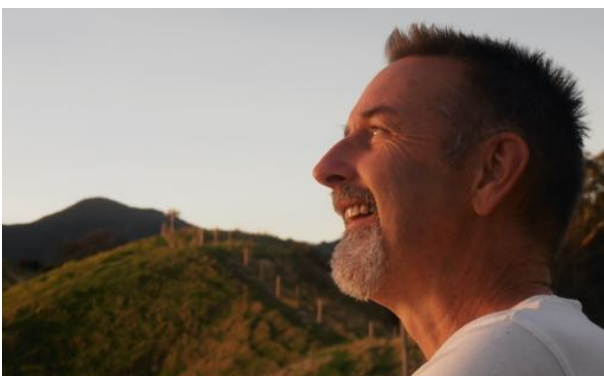
Bruce was an active member and later chairperson of the Motueka SPCA where his main focus was on de-sexing cats and dogs and fundraising to make that happen. He had a strong believe in the welfare of all animals.

Bruce and Sylvia started dancing modern jive in 2012 and later on they became part of the dance family called Inspire. The joy he showed on the dance floor was infectious and he was always keen to recruit new dancers.

Sylvia is very grateful for all the immense support for her physical and mental well-being. She wishes to thank all of the 300+ people who brought food and participated in Bruce's Celebration of Life at the Playhouse in Mapua. A special thank you to Nic and Manu for their generosity for providing their place and food. Also, to Toad Hall for providing additional food. There is an overwhelming amount of people who supported Sylvia and helped with making Bruce's farewell the way he would have wanted it. Far too many to list here. "From the bottom of my heart thank you so much for all that everyone has done for me and your continuing support."

As Bruce would say... "Thanks for looking after my wifey and thanks for appreciating my whiskey!"

*-Gloria Anderson*



### connect on Facebook:

#### Motueka Valley Community

A closed group with over 1700 members, who are not necessarily living in the valley, but have the valley at heart.

#### Motueka Valley Residents

A private group for people residing in the Motueka Valley area.

## Motueka Valley Association

**Meetings** every 2<sup>nd</sup> Wednesday of the month at 8pm (7.30pm in winter) in the Ngatimoti Community Rooms.

**Everyone welcome!**

For community concerns email the MVA at [info@mva.org.nz](mailto:info@mva.org.nz) or contact any of the following **committee members**:

Greg Mason	526 8112
Peter Laufkotter	526 8554
Fiona Nelson	020 4160 1968

### local halls/facilities

Ngatimoti Memorial Hall  
• Bex Douglas • 021 173 1279 • [ngatimoti.hall@gmail.com](mailto:ngatimoti.hall@gmail.com)  
Ngatimoti Community Rooms • Sarah Bradshaw • 526 8026  
Pokororo Hall • Sylvia Arnold • 526 8282  
Woodstock Hall • Kerry Hall • 543 3884

### about your newsletter

- delivered on the 1<sup>st</sup> Thursday of the month to 500 homes in the Motueka Valley from February to December
- send stories, photos & ads by the 20<sup>th</sup> of the month to the editor, Jan-Albert Droppers: [newsletter@mva.org.nz](mailto:newsletter@mva.org.nz)
- advertising rate: \$2.00 per column cm
- online newsletter + archives: [www.mva.org.nz](http://www.mva.org.nz)

**[www.mva.org.nz](http://www.mva.org.nz)**



During this time of lockdown,  
the MVA Committee is aware  
that the businesses  
advertising in this newsletter  
need support more than ever.

It was therefore decided that  
they will not be charged  
for their ads in this edition.  
Just a small gesture of support.



### Thinking real estate, Think Fay Stoker

Ensuring your real estate needs will be fully met  
fay.stoker@raywhite.com **022 359 4195**

Excalibre Real Estate Richmond Ltd, Licensed (REAA 2008)



*The difference that makes the difference...*

**Camille Nelson**  
Advanced Senior Practitioner and Course Facilitator  
[www.motuekacare.co.nz](http://www.motuekacare.co.nz)  
Ph: (03) 526 8223  
021 265 9423

**Ngatimoti Playgroup** is your local Motueka Valley community playgroup focused on fun and friendships, for kids and parents/caregivers alike. We are a welcoming group providing play and socialisation opportunities for all preschoolers and their whanau in our community, regardless of eventual schooling choice. The sessions are free and held weekly during term time on Fridays between 9:15 and 12:15, but families are welcome to arrive anytime during the session to fit in with naps etc. We are based in the Ngatimoti School hall on Greenhill road. Bring a plate for shared morning tea and join in the fun. We love to see new faces and welcome back old friends, so come along or contact Marian for more info on 03 543 3613 / 021 2400 416 or ngatimotiplaygroup@gmail.com.



### DUNBAR ESTATES CELLAR DOOR & CAFÉ

1469 Motueka Valley Highway, Ngatimoti

OPEN Wednesday to Sunday  
10am-4pm to May 2020.  
Otherwise see website or  
enquire by email.

03 526 8598 / 027 500 8400  
dunbarestates@xtra.co.nz

Our Pinot Noir has just won  
a silver medal at the AirNZ  
awards! Come and enjoy the  
wines with our summer fare.



## DUNBAR ESTATES

NELSON & CENTRAL OTAGO  
A taste of New Zealand life

### Lavish Gardens

Maintenance, makeovers, green waste removal.  
Grant - 03 526 8035

### FOR SALE - PEA STRAW

Conventional Bales: \$13 ea  
Medium Square Bales (13 Bale Equivalents): \$110 ea  
Call Marian on 03 543 3613 or txt 021 240 0416.  
Pickup in Dovedale or delivery to be negotiated.

### Chooks for sale

Hylines, regular batches. Heritage breeds in season.  
John McFadgen - Ph 021 234 4990

### DO THE CHALLENGES YOU FACE SOMETIMES SEEM TOO BIG?

*Are you looking for a way forward?*

Contact **Katerina Seligman**

I have offered a **Counselling Service** in this region  
for the past 36 years.

I am fully qualified and my approach is dynamic,  
highly effective, safe and 100% confidential.

I work with individuals, couples, children and families,  
on a wide range of issues:

conflict resolution, isolation, depression, addiction,  
trauma, physical health and more.

I also offer a clinical and workplace supervision service.

For an appointment or to find out more  
phone 03 528 0194 or 021 159 0263.

### Whare Ranginui Healing Centre



Reiki-healing for animals and people  
Past life regressions  
Aroma Touch

Sylvia 03 5268282  
sylvia.ranginui@gmail.com  
[www.whareranginui.co.nz](http://www.whareranginui.co.nz)



- OPERATING**
- DIGGERS
  - TRUCKS/DUMP TRUCKS
  - GRADERS/ROLLERS
  - ... AND MORE
- SUPPLYING**
- GRAVELS
  - BARK/MULCH ETC

For all earthmoving and explosives work  
 Contact us on 022 659 3978,  
[doctordigltd@gmail.com](mailto:doctordigltd@gmail.com) or find us on Facebook

Have your trees grown...  
 ...beyond your expectations?



Talk to Bob Roborgh

- Innovative advice on all aspects of landscaping & tree care
- 35 years' experience in confined felling & dangerous trees

## TREECARE

Ph. 027 247 8865 or 526 8803



## YOGA

with Mechthild Laufkotter

Ngatimoti, Community Rooms

Tuesday 9.15-10.45am, Thursday 5.30-7.00pm

Motueka, Laura Ingram Kindergarten

Friday 5.00 - 6.30pm

school terms only



03 526 8554



JOHN BUCHANAN  
 0273099920  
 GRAHAM VALLEY

# QUALIFIED BUILDER

New homes, renovations, decks, fencing.  
 Give me a call to discuss your project.

licensed Building Practitioner

## BUILDER

Available for work NOW

Kitchens/ Bathrooms/ Decks/ Renovations/  
 Tiling/ Painting/ Decorating & General Property Maintenance.

Phone Neil, your local licensed building practitioner at  
**WILDWOOD BUILDING**



027 201 8180 / 526 8798  
[wildwoodedz@gmail.com](mailto:wildwoodedz@gmail.com)



# The Vet Centre

Motueka, Mapua and Richmond

FREE TRAVEL Day .. Every Thursday

- Motueka River Valley • Dovedale • Tapawera
- Upper & Lower Moutere

Pets - Equine - Farm - Services & Supplies

Phone the Motueka Clinic  
 5288459

or Richmond on 03-5445566  
 Before 2pm on Wednesdays

to book an appointment with no travel charge  
[www.vetcentre.net.nz](http://www.vetcentre.net.nz)

- UV TREATMENT
- WATER SOFTENERS & RO UNITS
- SAND & NEUTRALISING FILTERS
- DOMESTIC/COMMERCIAL PUMPS
- STOCK WATER & GRAVITY FEED SUPPLIES
- MICRO HYDRO PIPE LINES
- WATER RAMS PUMPS
- WATER TANK INSTALLATION

## water FILTRATION & PUMPS

Frans van de Loo  
 0275 281 366

[frans.wfp@gmail.com](mailto:frans.wfp@gmail.com)  
[waterfiltrationpumps@gmail.com](http://waterfiltrationpumps@gmail.com)





## Luka Droppers Qualified Arborist



enquiries@thetreeteam.co.nz  
www.thetreeteam.co.nz  
022 083 0090

- all aspects of tree care
- fully insured
- road control
- hedge trimming
- free quotes
- large chipper and leaf blower

# SMA

## Stephan Meijer Architecture Ltd

Enhancing people and places...

820 west bank rd. RD1 Motueka 7196  
ph.03-5268557 mob.021-2606780  
e-mail:stephan@smal.co.nz

www.smal.co.nz



### Alan King

Qualified Automotive Engineer



### Oke Manga Services

NOW ISSUING WOFS

CARS \*\* TRAILERS \*\* MOTORBIKES

Petrol & Diesel Engines — Farm Machinery

\* All Repair Work \* Hay Contracting \*

Phone 03 526 8624 Mobile 021 145 9325



## Sound Choice Business Care

Bookkeeping & Next Steps

**Carla Jehle - Your local bookkeeper**

**Make time to do what you  
love in your business**

Effective Systems Setup  
Cashbooks • GST • PAYE • Financial Reporting  
Payroll and Accounting Software Training



Mobile 021 124 2050

carla.jehle@soundchoice.nz



# Nature Kids

Early Childhood Education Centre

Free hours for 2 to 5 year olds

24 hrs for 3-5 years

2 mornings for 2 year olds

Conditions apply

12 Queen Victoria Street Motueka, 528 8700.

www.naturekids.co.nz naturekidsmotueka@gmail.com

**all advertisements 8.5cm wide  
\$2 per cm high**

## High quality painting & decorating

Tony Hahn ensures quality & service second to none on new & refurbished residential & commercial properties in the greater Nelson/Tasman region.  
A local family business with over 30 years' experience.

Phone free: 0800 733326

Phone: 027 442 5010

www.hahndecorators.co.nz

- PAINTING
- WALLPAPERING
- WATERBLASTING
- SPRAYPAINTING



## hahndecorators

COMPLETE HOME & COMMERCIAL PAINTING & DECORATING SERVICE

## Jacqui's Therapies

Beauty, Yoga & Massage Therapy

Jacqui Jenkins

jacquijenkins72@gmail.com

Dip M.T. NZQA (LHC), Dip B.T. ITEC (NASA)

Dip Y.T.T. NZQA (YTTA)

0211 588 319



## Dru Yoga



- Soft, flowing postures & sequences
- Suitable for all ages & abilities
- Relax, re-energise & feel great!

Monday 5.30-7pm

Ngatimoti Community Room

kathymae.nauta@gmail.com

Kath 526 8068

## LOCALS - looking after locals!



"I offer you a wealth of travel industry knowledge, wrapped up with all the great prices and innovative travel products that House of Travel are famous for".

**DIANNE BOYES** Travel Consultant

Contact Dianne now  
you'll be well looked after

House of Travel Motueka  
193 High Street, Motueka  
03 528 1122  
dianneb@hot.co.nz

HOUSE OF TRAVEL

HOW KIWIS SEE  
the WORLD