

Motueka Valley Association Newsletter

The River, The Land, The People

June 2022

Support for our Fireys

A local safety issue has been raised by some residents about a reduced number of our local volunteer fire officers. This reduced number of volunteers has been largely due to the Covid-19 vaccination mandate imposed by Central government on public agencies like Fire and Emergency New Zealand (FENZ). Despite Police and Defence Force personnel having won a case against the vaccination mandate on religious grounds and the right to refuse medical treatment, it still remains mandatory for FENZ workers in certain roles to be vaccinated and have received their booster vaccination because of the work they carry out. This includes Operational firefighter roles; Operational support units; Group, District and Region Managers, and Urban Search and Rescue roles.

One resident expressed fears that if his house was on fire it could burn down before Motueka Fire Brigade arrived: "It could take an hour for them to come out from Motueka, and my house could be gone...", says Peter Laufkotter. Graham Durrant, Senior Station Officer at FENZ Ngatimoti is not concerned with the ability of our volunteer fire service to attend any emergency call-outs:

"For any call-out we are always supported by Motueka, Tapawera and Tasman Fire Services depending on the location of the incident."

"However, we are always happy to encourage new volunteers to join our team," Graham says, "We have a fortnightly practice on Wednesday evenings 7 to 9pm at the fire station".

Ngatimoti's volunteer fire service was set-up in 1985 by the local community with the help of Tasman District Council (TDC). In 2018, rural and urban fire services around the country were merged into one under Fire

and Emergency New Zealand (FENZ). This has meant our fire service is now guaranteed funding with a wider range of resources available to use e.g. Medical Co-responder and Swift Water rescue equipment.

"Volunteering with FENZ doesn't mean you have to fight fires," Graham says, "There are many other jobs we need help with...".

Fiona Nelson - Reporter

For anyone who would like to join FENZ Ngatimoti, call Graham Durrant on 021526815, or deputy controller: Jim Perry – 0211357408

Bringing the Community and Forestry Together

The inaugural meeting of Motueka Catchment Collective (MCC) Forestry group was held in May at Shedwood Hall, Tapawera. The meeting was organised to consider forestry's contribution to the long term health of Motueka Catchment – *What do we want to see in 2075?* Over thirty people attended - sheep and beef farmers, those involved with farm forestry, orchardists and other interested landusers from the upper to the lower Motueka catchment. There was also representation from five forestry companies and from Tasman District Council (TDC).



MCC's purpose to hold the meeting was to enable the forestry sector to be a strong collaborative partner in caring for the Motueka catchment through participation in the Catchment Collective. Jo Leyland, MCC Co-Convenor, introduced the meeting saying it was one of the real bonuses to have such diversity of opinion and strong expertise in the room. The workshop was facilitated by Peter Lawless who has been developing a Tasman District Biodiversity Strategy for council.

(Continued on Page 2)





We Need You!

Fire & Emergency are on the lookout for committed new Male & Female Volunteers

New member enquiry always welcome at FENZ Ngatimoti.
For info around joining the team contact:
Graham Durrant
021 526 815



NGATIMOTI FIRE STATION



Bringing the Community and Forestry Together *(Continued)*

Roger May, MCC Co-Convenor, Forestry consultant and Orinoco resident gave a presentation to give some context to forestry in the Motueka Catchment. Of the 57,700 hectares plantation estate, 90% is Radiata pine with 1,855 hectares clearfelled each year. Post logging, land is vulnerable to erosion for more than three years which means that 5,500 hectares of harvested land are exposed to the elements and vulnerable to sheet erosion and landslides. This risk is increased with the predicted increasing frequency and intensity of rainfall and flooding events.



According to 2020 figures, Forestry is New Zealand's third largest export industry, worth over \$5 billion, providing 1.7% of global industrial roundwood production, and is dominated by Radiata pine. Roger highlighted the amount we spend on importing specialist timber - over \$1 billion of 'Special Purpose Timbers'. He also highlighted the cost of importing raw arsenic salt to make CCA which is used to treat Radiata pine to make it ground durable. CCA treated timber is toxic and can't be burnt or buried, and so sits in stockpiles around the country. "There is a clear need to expand the timber species we grow", he said. He also made note of the problem of increasing siltation and sedimentation into our waterways.

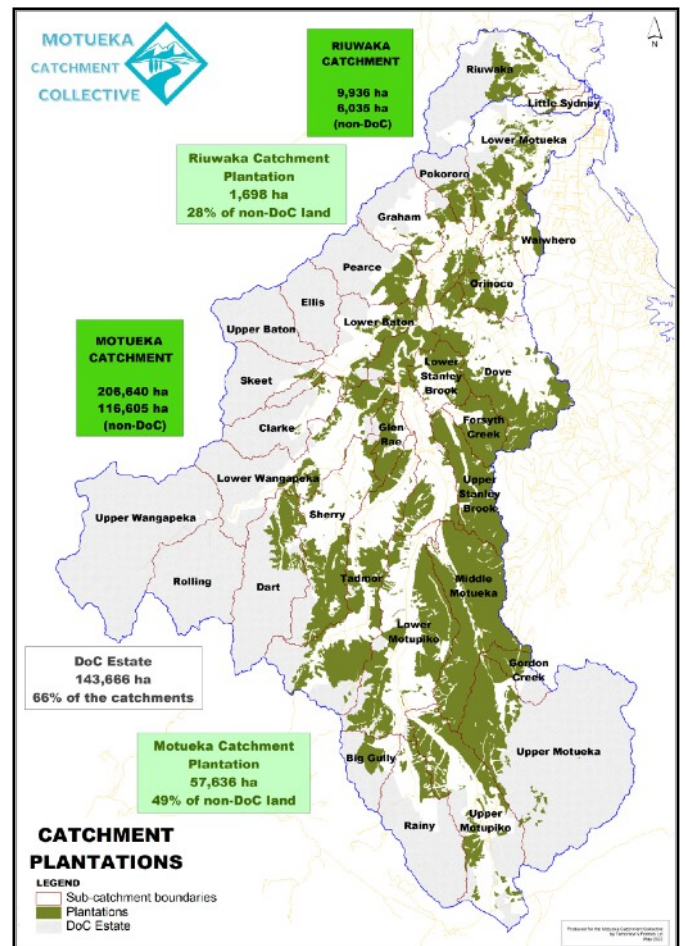
After Roger's presentation, small mixed groups considered four themes: issues from a community/environmental perspective, issues from a forestry sector perspective, opportunities to do better, and ideas for next steps. Some of the issues raised were the dominance of radiata pine and consideration needed of alternative timbers – native and exotic hardwood species; problems with clearfell logging; Forestry regulations and Best Practice; slash management; sedimentation and sediment loss into waterways and bay.

Weed and pest control were also identified and the need to collectively tackle Old Man's Beard infestations in the catchment. Overall, the need for improved communication between forestry and the community was strongly noted, as well as acknowledgement of the changes and good practices that are happening, such as OneFortyOne's project to study the performance of sediment control practices.



At the end, many of the group were interested in being part of an on-going Forestry working group. Jo considers that the meeting was: "...A very good start to what has the potential to improve knowledge sharing and practices in forestry from smaller woodlots to bigger plantation areas, and also to make the forestry sector a stronger member of the catchment community."


Fiona Nelson - Reporter





Iyengar
YOGA
 with Mechthild Laufkotter

Tuesday 9.15-10.45am Thursday 5.00-6.30pm
 Community Room Ngatimoti
 Friday 4.30-6.00pm
 St. Andrews Church Hall Motueka



Trees That Count for Motueka Catchment

The Motueka Catchment Collective has received funding for 8000 native trees from Trees that Count.

5000 of these trees will be planted at 11 community plantings across the catchment to celebrate the Queen's Platinum Jubilee. These public gatherings are great opportunities to not only help provide a living tribute to a remarkable woman who has served for 70 years, but also to meet up with the local community whilst supporting the Motueka Catchment Collective with positive actions on the ground.

All are welcome as we would love you to be involved. Come prepared for planting and bring your own spade!

Please use this link to pre-register your interest in participating in one or more of the community planting events. This will allow us to provide you with the physical address, more information on the individual project and to contact you if the event needs to be delayed due to rain etc.

You can also use this link to become part of the Motueka Catchment Collective and learn more about what we are doing. <https://www.surveymonkey.com/r/K9V6BH6>

Planting events:

Tapawera Baton Road 9 June

Greenhill Road 18 June 1 pm

Mytton Heights 25 June 10 am

Stanley Brook, 2nd July

Tadmor Road, 9th July

Upper Stanley Brook Road, 26 July . Tapawera School

Clarke Valley Road, 13 August

Brooklyn 14 August

Lindon Place Reserve. Brooklyn School planting. tba

Woodstock tba

Herring stream Road, end August



We have a further 3000 trees to provide to landowners in the catchment

<https://www.surveymonkey.com/r/8B2RVWV>



Wish you could click that survey link?

Sign up to receive this newsletter via email!

www.mva.org.nz



Do you have local news or a valid community issue to raise?

What do you think about the reduced number of firefighters?

Let us know!

newsletter@mvz.org.nz

The annual Mid-Winter Pot Luck



is set for Friday 1 July

If you can assist with this much-loved community gathering, please contact a committee member, or email info@mva.org.nz
See you there!

The Next MVA Meeting Is

Wednesday 8 June, 7.30pm
Ngatimoti Community Rooms

All Welcome!

NGATIMOTI SCHOOL NEWS - June 2022

Terms and Holiday Dates 2022

Term Two: 2 May - 8 July

Queen's Birthday - Monday 6 June

Matariki holiday - Friday 24 June

Term Three: 25 July - 30 September

Term Four: 17 October - 15 December



**He taonga
rongonui te aroha
ki te tangata.**

Goodwill towards others
is a precious treasure.

Swimming Pool Key holders Please return your pool key to the school office for your \$10 refund within school hours or contact the school to arrange. Thank you!

In Term 3 we are busy being innovative, with a special focus on technology challenges using all sorts of media, from lego to robotics with our school represented by two teams in the interschool's EPro8 Challenge.

Our winter sports teams are super busy with netball and rugby and our school cross country training. Huge thanks once again to Ed Stevens for the use of his land for our cross country track.

In our Environmental learning we are planting some native tree and shrubs locally and continue our monitoring of the health of our local stream as well as looking at some Māori perspectives on nature and insect monitoring. All our classes are visiting our adopted section of Bark Bay for some environmental studies and our Abel Tasman Youth Ambassadors continue their work with Project Janszoon there too.

We are looking forward to a Matariki disco towards the end of June and some road safety learning with the Bikes in Schools programme.

NGATIMOTI FESTIVAL DAY SUNDAY 23 OCTOBER ☺

Stall holder applications open in Term 3.
We hope our 20th Festival is able to go ahead this year. Thank you for your continued support!



Benji, Tui & Beau enjoying some technology learning



On Friday 20 May we were a sea of pink as we celebrated being bully-free for Pink Shirt Day. The theme this year was 'little ripples make big waves' which was a great saying for Ngatimoti, as it fits in well with our R.I.V.E.R. values (Respect, Innovation, Positivity, Excellence, Responsibility). Bullying is insidious, and can be perceived differently by some. If the intent is to put somebody down, deliberately and consistently be mean or leave others out, that is bullying. Life is great when we all focus on being kind and thoughtful of one another. ☺ We raised \$60 for the Mental Health Foundation. Thanks for all your support!

New enrolments are welcome at Ngatimoti School. For more information please contact Alison Turner

Tel: 03 526 8842. office@ngatimoti.school.nz www.ngatimoti.school.nz



In other news, Ali has beautiful pure bred Border Collie puppies for sale, nearly ready for new homes! Contact Ali at school for more details.



**A MOTUEKA COUNSELLING SERVICE
WITH EXPERIENCE AND HEART**

Katerina Seligman m. AANZPA
Phone: 03 528 0194
Mobile: 021 159 0263
Email: katselig@xtra.co.nz



BEE SWARMS

Pease ring Bernd our local beekeeper
at [03 5268545](tel:035268545) or [02102212313](tel:02102212313)
to come and collect and
provide a good home for
them!

A sweet reward at the end
of summer shall be yours.



High quality painting & decorating

Tony Hahn ensures quality & service second to none on
new & refurbished residential & commercial properties
in the greater Nelson/Tasman region.
A local family business with over 30 years' experience.

Phone free: 0800 733326
Phone: 027 442 5010
www.hahndecorators.co.nz

- PAINTING
- WALLPAPERING
- WATERBLASTING
- SPRAYPAINTING



Servicing all your real estate needs throughout
Motueka, Riwaka, Brooklyn, Richmond, Stoke,
Nelson, Ngatimoti, Tasman, Mapua, Westbank,
Ruby Bay, Upper & Lower Moutere districts -

RayWhite.

Big or Small, I Sell it All,
Contact:

Fay Stoker

Licensed REAA 2008
Ray White Motueka
219 High Street



022 359 4195

"Excellence Every Time"

fay.stoker@raywhite.com

**ST. JAMES CHURCH
NGATIMOTI**

Family Service

Sunday 19th June at 10:30 a.m.

Children's Sunday School

**Morning tea and social time
to follow.**

**All Are Welcome,
come and join us, it's your
Church for the community**

**A new music class for parents and baby
to bond through music**

Build confidence and competence in being
your most musical self to engage your baby in
musical moments throughout each day. Foster a
joyous interactive musical relationship; sing for the
love of singing, and for the many developmental
benefits that shared musical engagement has for
your child

Ngatimoti, Tuesdays, 2:30-3:30pm, starting May 3rd
Motueka, Thursdays, 10:30-11:30am, starting May 5th

\$100 for a 10-class series for 0-12 month olds and
parent/carer.

Enquires to Music Educator/Facilitator, Marie
Willis on mariembagley@gmail.com

**Musical
magic**

made here!

Hear magic from your vinyl!
Made in Motueka and sold
around the world.



THE WAND
TURNTABLE & TONEARM
www.thewandtonearm.com

FOR SALE



Pea Straw - Medium Square Bales (3x3x6)
12 Bale equiv: \$140 ea
These bales are spray free

Linseed Straw - Medium Square Bales (3x3x6)
12 Bale equiv: \$140 ea
These bales are organic

Call Marian on 03 543 3613 or txt 021 2400 416
or email marianchick@gmail.com



Crafted Earth Nursery
Unusual perennials
Organically grown vegetables,
herbs & more
Open by appointment or come and see
us at the Motueka Sunday Market
Call Joel on 021 028 47245

www.craftedearth.co.nz  [@craftedearthnz](https://www.facebook.com/craftedearthnz)  [@craftedearth](https://www.instagram.com/craftedearth)

BINGO

Skip Hire General or Green Waste

Rubbish Skips Available for:

- Residential
- Industrial
- Builder's waste
- Garden waste
- General clean-ups

2 – 8 cubic metre skips available

Phone 03 528 0000

admin@bingoskiphire.co.nz

www.bingoskiphire.co.nz

Lavish Gardens

Maintenance, makeovers, green waste removal.

Grant - 03 526 8035



Connect on Facebook:

Motueka Valley Community

A group with over 2700 members, who are not necessarily living in the valley, but have the valley at heart.

Motueka Valley Residents Group

A group for people residing in the Motueka Valley area.

all advertisements
8.5cm wide
\$2 per cm high
Max. 12cm high

Whare Ranginui Healing Centre



Reiki-healing for animals and people

Past life regressions

Aroma Touch

Sylvia 03 5268282

sylvia.ranginui@gmail.com

Location of AEDs in Motueka Valley

- **Woodstock Automotive (Kerry Hall)**
1982 Dovedale Road, Woodstock Junction.
- **Ngatimoti Community Rooms/Fire Station**
Motueka Valley Highway next to Ngatimoti School
- **Pokororo Hall**
West Bank Road at corner of Graham Valley Road

Motueka Valley Defibrillator Group is a registered charity (CC50792). Donations towards the maintenance of the AEDs can be made to: Motueka Valley Defibrillator Group, NBS acc # 03-1354-0474291-00 or contact Gloria Anderson, chairperson, on 526 8644 for more information.

AED



Automated
External
Defibrillator



Sound Choice
BUSINESS SUPPORT
Far beyond the numbers

- ✓ Loving your own business - Dreading your weekly paperwork
- ✓ Starting a new business - Struggling with admin & systems
- ✓ Being your own boss - Fed up with how you spend your time
- ✓ Business is great - Cash flow is poor & accounts are behind




We've got your back. Let us do the behind the scenes work or train you to efficiently manage your finances, GST, payroll and admin.

'Energy flows where focus goes.'

Turn your business into what it is meant to be, for your customers, your community and yourself.

www.soundchoice.nz | 021 124 2050 | carla.jehle@soundchoice.nz



**The
Vet
Centre**

Motueka, Mapua and Richmond

FREE TRAVEL Day .. Every Thursday

- Motueka River Valley • Dovedale • Tapawera
- Upper & Lower Moutere

Pets - Equine - Farm - Services & Supplies

**Phone the Motueka Clinic
5288459**

or Richmond on 03-5445566
Before 2pm on Wednesdays

to book an appointment with no travel charge
www.vetcentre.net.nz

ZEALAND ROOFING LTD



NIGEL BRUNT

*Repairs *Maintenance *Expert Advise
SPECIALISING IN METAL & CONCRETE TILES

Free No Obligation Quote: Nina Brunt
0274947946 | admin@zealandroofing.co.nz
www.zealandroofing.co.nz




**DOCTOR DIG
EARTHWORKS**

OPERATING

- DIGGERS
- TRUCKS/DUMP TRUCKS
- GRADERS/ROLLERS
- ... AND MORE

SUPPLYING

- GRAVELS
- BARK/MULCH ETC

For all earthmoving and explosives work
Contact us on 022 659 3978,
doctordigltd@gmail.com or find us on Facebook

Motueka Valley Association

Meetings every 2nd Wednesday of the month at 8pm (7.30pm in winter) in the Ngatimoti Community Rooms.

Everyone always welcome!

For community concerns email the MVA at info@mva.org.nz or contact any of the following **committee members**:

Peter Laufkotter	526 8554
Fiona Nelson	020 4160 1968
Joel Briffault	021 0284 7245
Fay Knight	022 320 0449

about your newsletter

Kamal Willis has taken over the role of newsletter editor from Suji. For your stories, photos, advertisements by the 20th of the month and/or feedback you can contact him on newsletter@mva.org.nz

- Delivered to 500 homes in the Motueka Valley from Feb to Dec
- Advertising rate: \$2.00 per column cm
- Online newsletter + archives: www.mva.org.nz

www.mva.org.nz

local halls/facilities

Ngatimoti Memorial Hall • Bex Douglas
021 173 1279 • ngatimoti.hall@gmail.com

Ngatimoti Community Rooms • Sarah Brashaw
526 8026

Pokororo Hall • Sylvia Arnold • 526 8282

Woodstock Hall • Kerry Hall • 543 3884

Ange Palmer

**Medical
Herbalist**



fatigue
hormones
gut issues

BATON VALLEY CLINIC,
ONLINE & HOUSE CALLS

www.angepalmer.com ~ In practice since 2001 ~

UV TREATMENT

WATER SOFTENERS & RO UNITS

SAND & NEUTRALISING FILTERS

DOMESTIC/COMMERCIAL PUMPS

STOCK WATER
& GRAVITY FEED SUPPLIES

MICRO HYDRO PIPE LINES

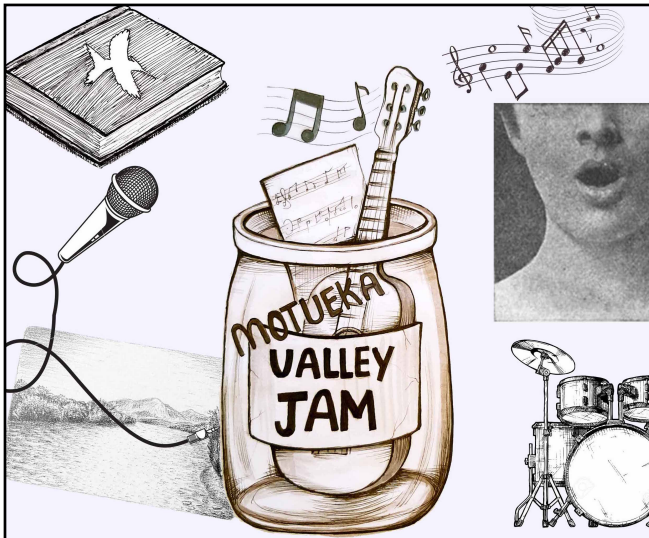
WATER RAMS PUMPS

WATER TANK INSTALLATION

**water
FILTRATION
& PUMPS**

Frans van de Loo
0275 281 366

frans.wfp@gmail.com
waterfiltrationpumps@gmail.com



Motueka Valley Open Mic

Come and check out our awesome valley's local musicians, storytellers, comedians and diverse folk for a night of whatever goes on the mic.


All are welcome to participate
or just come and enjoy.

The 2nd Thursday of every month, 7.30pm

Proudly supported by Ngatimoti Hall

Committee and the MVA.

Koha Appreciated



The difference that makes the difference...

Camille Nelson
Advanced Senior Practitioner and Course Facilitator
www.motuekacontactcare.co.nz
Ph: (03) 526 8223
021 265 9423

Billy's Truck & Digger hire

- for all earth moving
- house sites
- hole boring 300/450/600mm
- ditch clearing
- re-graveling driveways
- water tank placement
- gravel supplies



For 25 years experience phone Billy, 021 170 2528.

IAN'S MOBILE MECHANICAL SERVICES

All vehicle & equipment servicing & repairs

We come to you ! 35 years' experience

Chainsaws & Mowers; Motorbikes & Cars;
Quads & Tractors; Trucks & Excavators; Generators

Mobile: 027 307 0303

iansmobilemechanicalservices@gmail.com



Luka Droppers

Qualified Arborist

enquiries@thetreeteam.co.nz
www.thetreeteam.co.nz
022 083 0090

- all aspects of tree care
- fully insured
- road control
- hedge trimming
- free quotes
- large chipper and leaf blower



Nature Kids

Early Childhood Education Centre

Free hours for 2 to 5 year olds
24 hrs for 3-5 years
2 mornings for 2 year olds
Conditions apply

12 Queen Victoria Street Motueka, 528 8700.
www.naturekids.co.nz naturekidsmotueka@gmail.com



Alan King
Qualified Automotive Engineer

Oke Manga Services

NOW ISSUING WOFS
CARS ** TRAILERS ** MOTORBIKES
Petrol & Diesel Engines — Farm Machinery
* All Repair Work * Hay Contracting *

Phone 03 526 8624 Mobile 021 145 9325



SMA

Stephan Meijer Architecture Ltd
Enhancing people and places...

820 west bank rd. RD1 Motueka 7196
ph.03-5268557 mob.021-2606780
e-mail: stephan@smal.co.nz
www.smal.co.nz

This newsletter has
been kindly printed by

FUJIFILM

Value from Innovation

55 Collingwood Street, Nelson