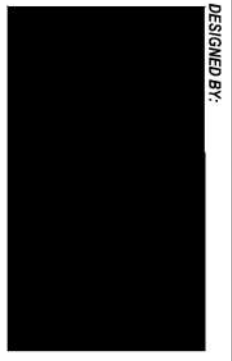


**DETAIL 'A'**  
NOT TO SCALE

**tasmanian** Te Kaitiaki o  
district council **te tai o Aorere**

APPROVED BY: \_\_\_\_\_  
DATE: \_\_\_\_\_  
ENGINEERING MANAGER

TDC CONTRACT NUMBER



**Cotton & Light Ltd**  
**SURVEYORS**

28 Oxford Street  
PO Box 3406  
Richmond 7050  
www.cottonandlight.co.nz

Ph: (03) 544 5470  
Free Phone: 0800 604695  
Email: survey@cottonandlight.co.nz

**DRAFT**



PROJECT  
**NELSON TASMAN CYCLE TRAILS TRUST  
GREAT TASTE TRAIL - CYCLE TRACK -  
POKORORO**

DESIGNED BY: \_\_\_\_\_

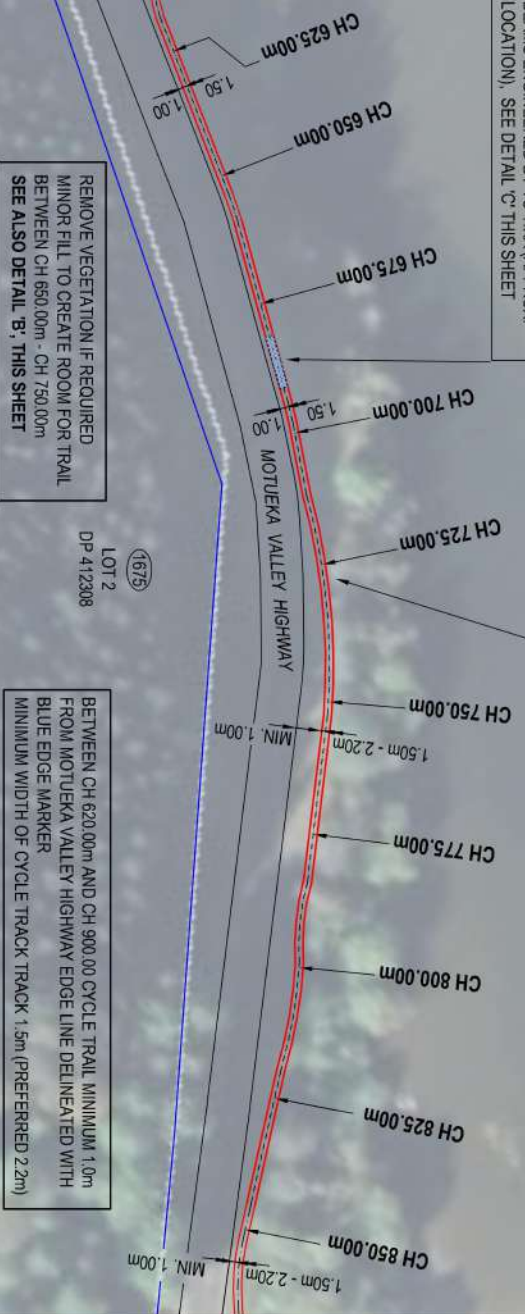
GENERAL NOTES  
SEE ABOVE

TITLE  
**PLAN LAYOUT FROM  
CH 0.00m - CH 625.00m**

DATE	REVISION	DES	DRN	CHD	APD	JOB No
23/06/21	CONCEPT	NR	AS			R1382

SCALE 1 : 1000  
SHEET 2 OF 10

10m SPAN BRIDGE BASED ON EXISTING STEEL BEAMS ENGINEERED BY TU TIKA (APPROX LOCATION), SEE DETAIL 'C' THIS SHEET

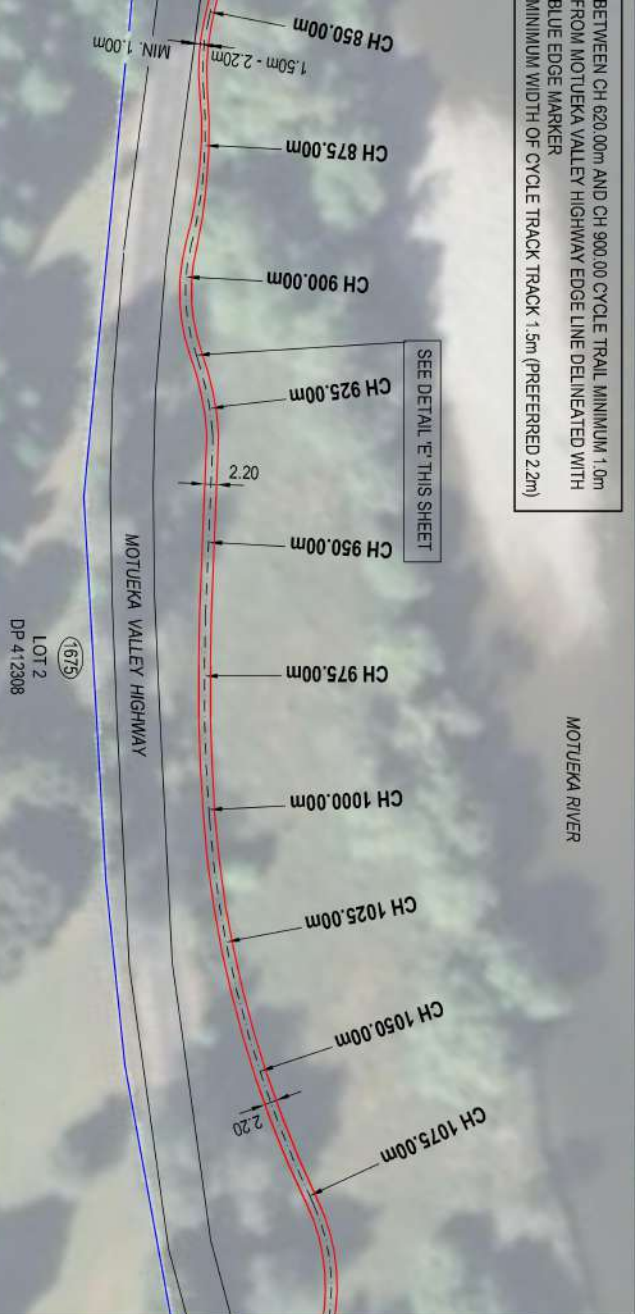


SEE DETAIL 'D' THIS SHEET

MOTUEKA RIVER

FROM MOTUEKA VALLEY HIGHWAY BLUE EDGE MARKER MINIMUM 1.0m

BETWEEN CH 620.00m AND CH 900.00 CYCLE TRAIL MINIMUM 1.0m FROM MOTUEKA VALLEY HIGHWAY EDGE LINE DELINEATED WITH BLUE EDGE MARKER MINIMUM WIDTH OF CYCLE TRACK TRACK 1.5m (PREFERRED 2.2m)



SEE DETAIL 'E' THIS SHEET

MOTUEKA RIVER

LOT 2 DP 412308

**tasmanian** district council | Te Kaitiaki o te taiohi Aorere

APPROVED BY: \_\_\_\_\_

DATE: \_\_\_\_\_

ENGINEERING MANAGER: \_\_\_\_\_

TDC CONTRACT NUMBER: \_\_\_\_\_



**Cotton & Light Ltd**  
**SURVEYORS**

28 Oxford Street  
PO Box 3406  
Richmond 7850  
www.cottonandlight.co.nz

PH: (03) 544 5470  
Free Phone: 0800 604695  
Email: survey@cottonandlight.co.nz

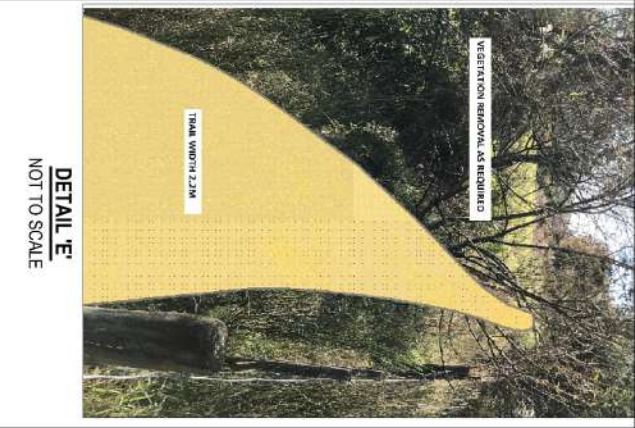
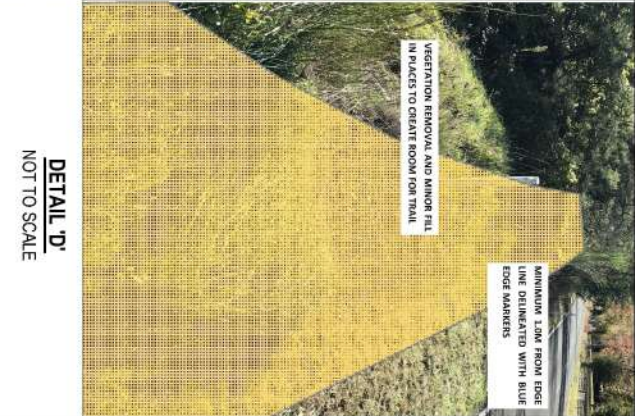
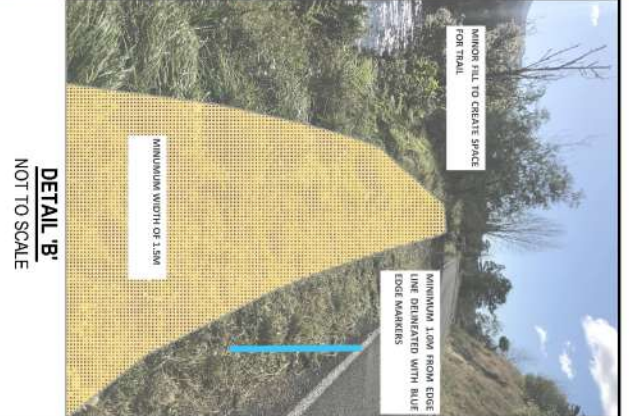
**DRAFT**

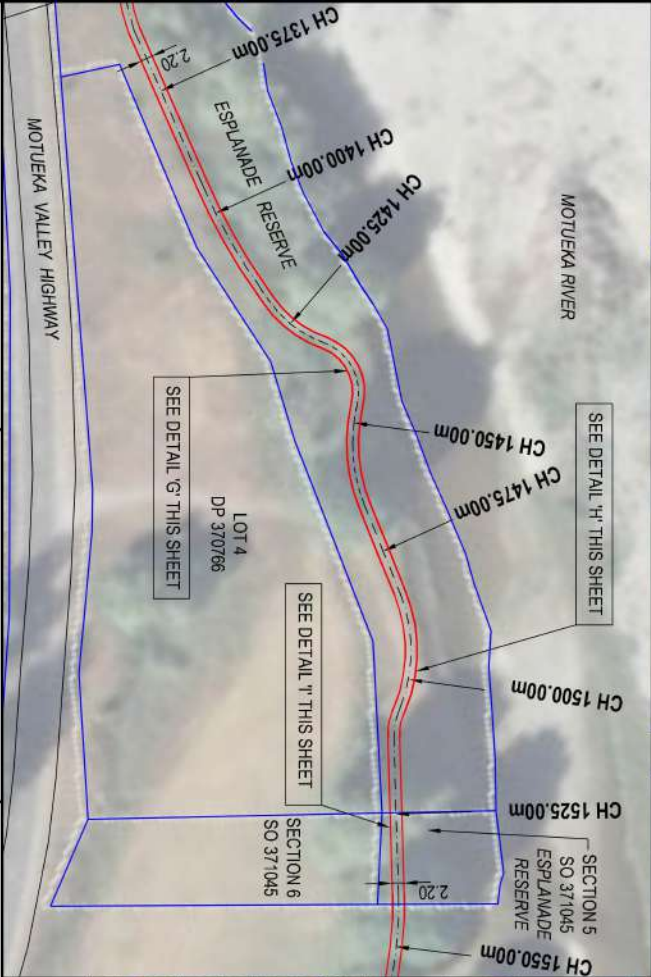
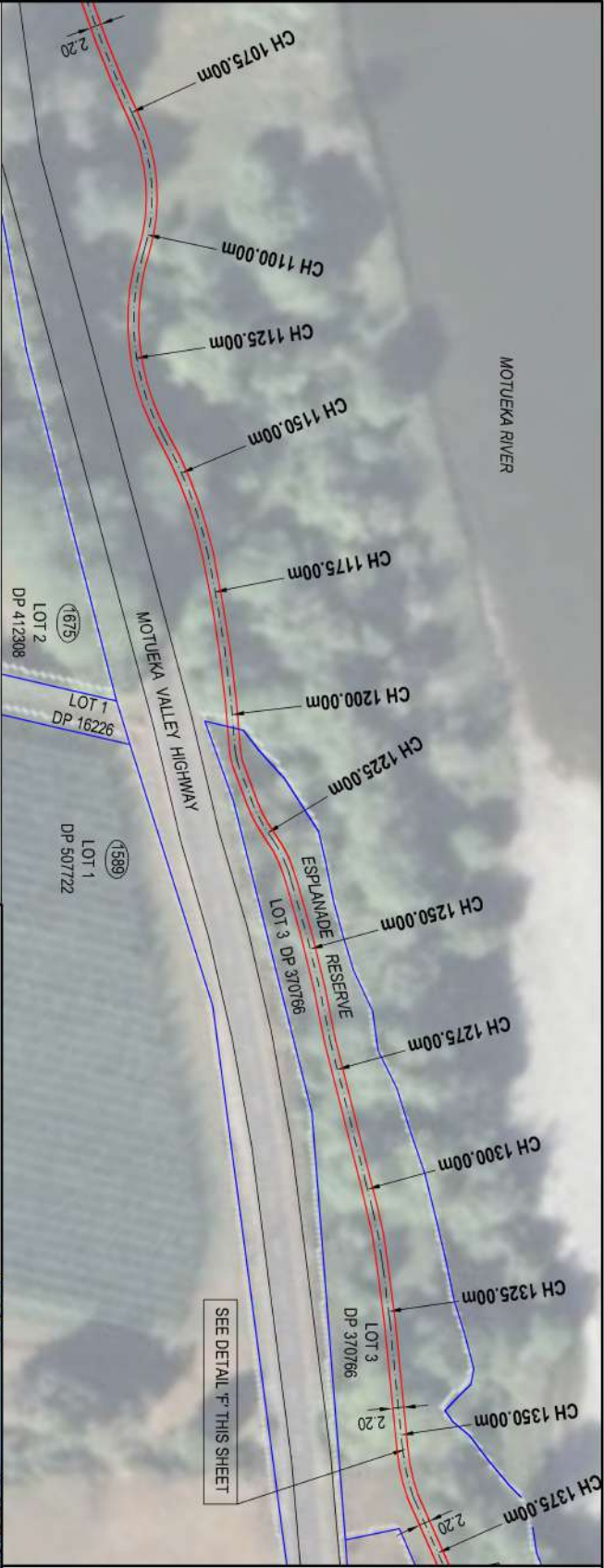



GENERAL NOTES  
SEE ABOVE


PROJECT  
NELSON TASMAN CYCLE TRAILS TRUST  
GREAT TASTE TRAIL - CYCLE TRACK -  
POKORORO

TITLE	PLAN LAYOUT FROM	SCALE
CH 625.00m - CH 1075.00m		1 : 1000
DATE	REVISION	SHEET 3 OF 10
23/06/21	CONCEPT	
DES	DRN	CHD
NR	AS	APD
		JOB No
		R1382






  
 tasmanian district council

APPROVED BY: 
  
 ENGINEERING MANAGER

DATE: \_\_\_\_\_

TDC CONTRACT NUMBER: \_\_\_\_\_

DESIGNED BY: 
  
 Nga Haerenga

**THE NEW ZEALAND CYCLE TRAIL**

**Cotton & Light Ltd**  
**SURVEYORS**

28 Oxford Street  
 PO Box 3406  
 Richmond 7050  
 www.cottonandlight.co.nz

PH: (03) 544 5470  
 Free Phone: 0800 604695  
 Email: survey@cottonandlight.co.nz

**DRAFT**

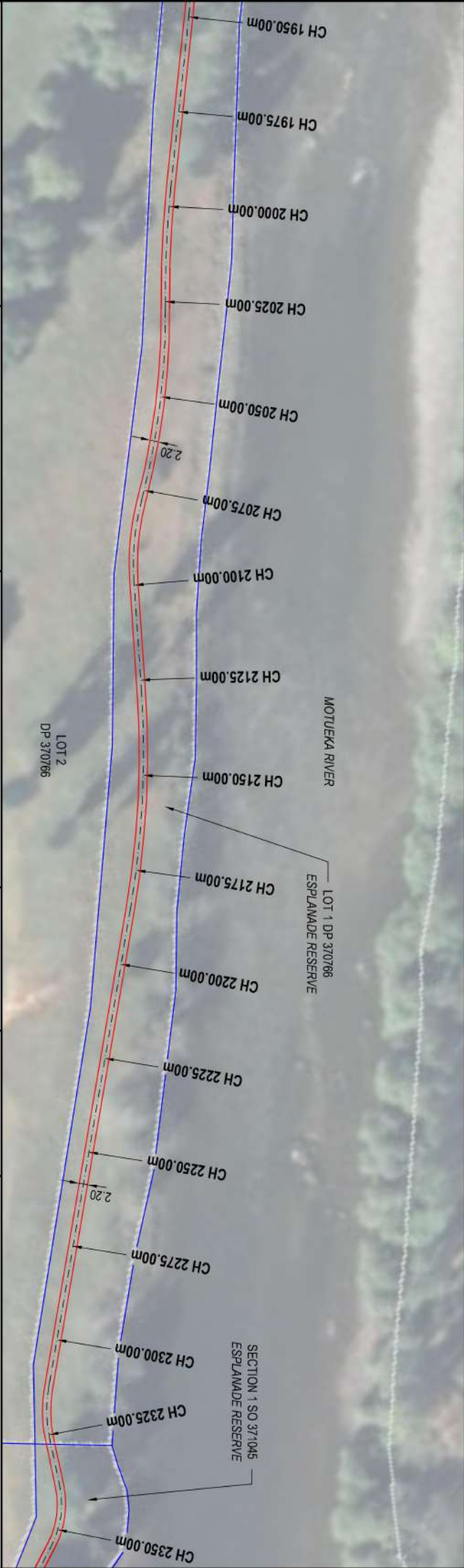
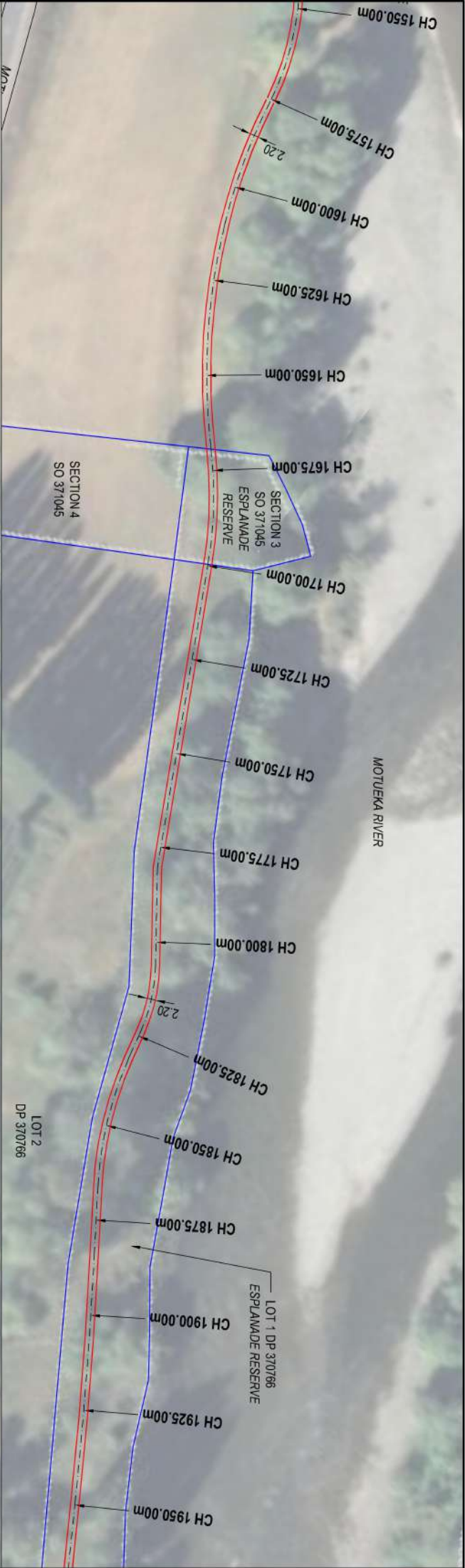



PROJECT: NELSON TASMANIAN CYCLE TRAILS TRUST  
 GREAT TASTE TRAIL - CYCLE TRACK -  
 POKORORO

TITLE: PLAN LAYOUT FROM  
 CH 1075.00m - CH 1550.00m

DATE	REVISION	DES	DRN	CHD	APD	JOB NO
23/06/21	CONCEPT	NR	AS			R1382

SCALE: 1 : 1000  
 SHEET: 4 OF 10




  
 APPROVED BY: \_\_\_\_\_

DATE: \_\_\_\_\_

ENGINEERING MANAGER: \_\_\_\_\_

TDC CONTRACT NUMBER: \_\_\_\_\_

DESIGNED BY: 
  
 THE NEW ZEALAND CYCLE TRAIL

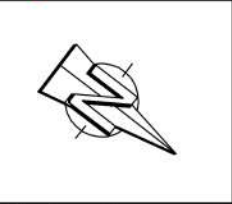
DRAFTED BY: 
  
**Cotton & Light Ltd**
  
**SURVEYORS**

28 Oxford Street  
 PO Box 3406  
 Richmond 7050  
 www.cottonandlight.co.nz

Ph: (03) 544 5470  
 Free Phone: 0800 604695  
 Email: survey@cottonandlight.co.nz

GENERAL NOTES  
 SEE ABOVE

**DRAFT**



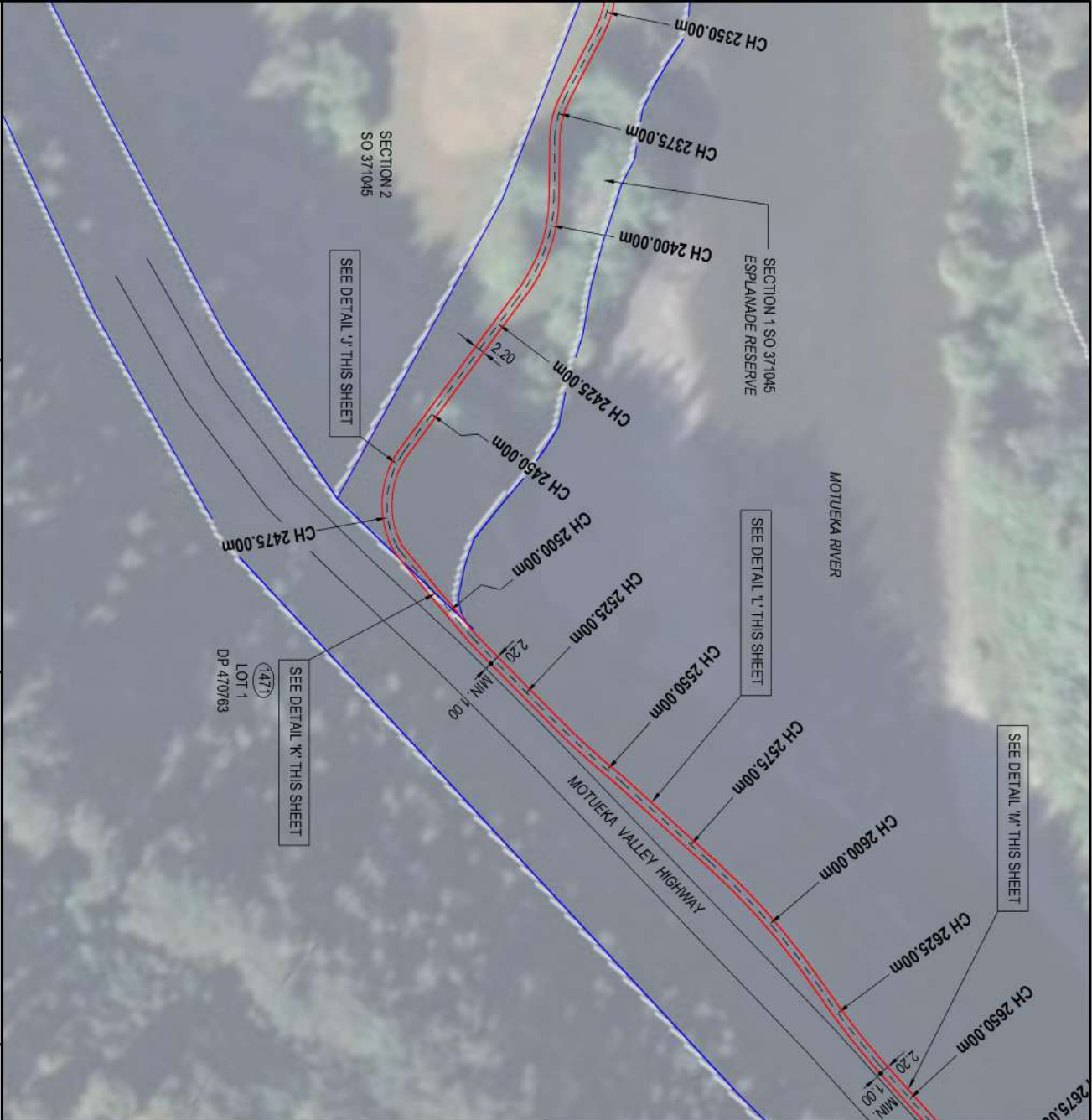
PROJECT  
**NELSON TASMAN CYCLE TRAILS TRUST**  
**GREAT TASTE TRAIL - CYCLE TRACK -**  
**POKORORO**

TITLE  
**PLAN LAYOUT FROM**  
**CH 1550.00m - CH 2350.00m**

SCALE  
**1 : 1000**

DATE	REVISION	DES	DRN	CHD	APP	JOB No
23/06/21	CONCEPT	NR	AS			R1382

SHEET 5 OF 10



**tasmanian** district council  
 Te Kaitiaki o Aorere  
 APPROVED BY: \_\_\_\_\_  
 DATE: \_\_\_\_\_  
 ENGINEERING MANAGER  
 TDC CONTRACT NUMBER

DESIGNED BY:  

 THE NEW ZEALAND CYCLE TRAIL

DRAFTED BY:  

 Cotton & Light Ltd  
 SURVEYORS  
 28 Oxford Street  
 PO Box 3406  
 Richmond 7050  
 www.cottonandlight.co.nz  
 PH: (03) 544 5470  
 Free Phone: 0800 604695  
 Email: survey@cottonandlight.co.nz

GENERAL NOTES  
 SEE ABOVE  
**DRAFT**



PROJECT

**NELSON TASMAN CYCLE TRAILS TRUST  
GREAT TASTE TRAIL - CYCLE TRACK -  
POKORORO**

TITLE

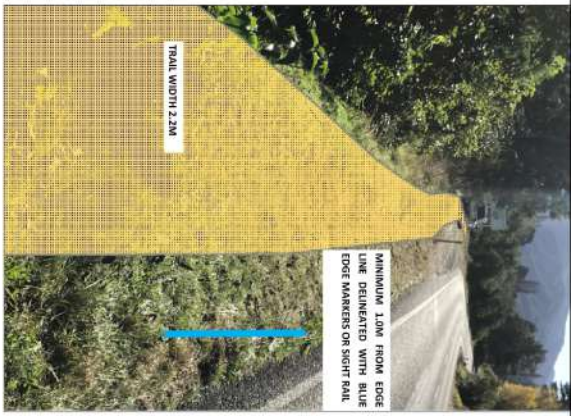
**PLAN LAYOUT FROM  
CH 2350.00m - CH 2650.00m**

SCALE 1 : 1000

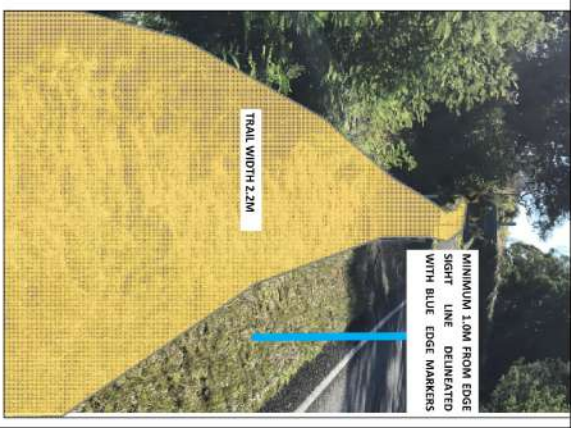
SHEET 6 OF 10

DATE	REVISION	DES	DRN	CHD	APD	JOB No
23/06/21	CONCEPT	NR	AS			R1382

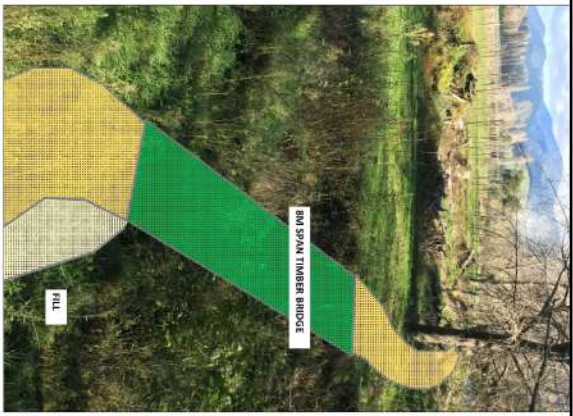
**DETAIL 'L'**  
NOT TO SCALE



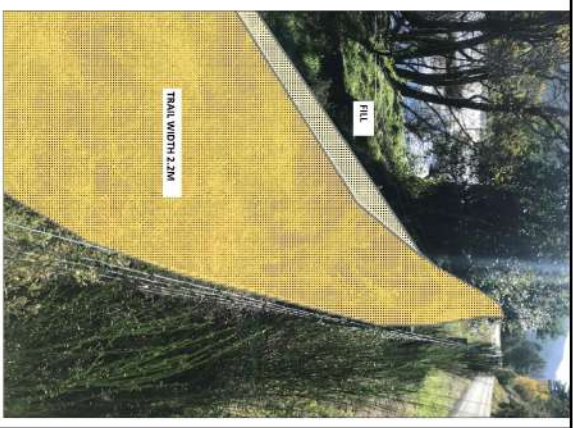
**DETAIL 'M'**  
NOT TO SCALE

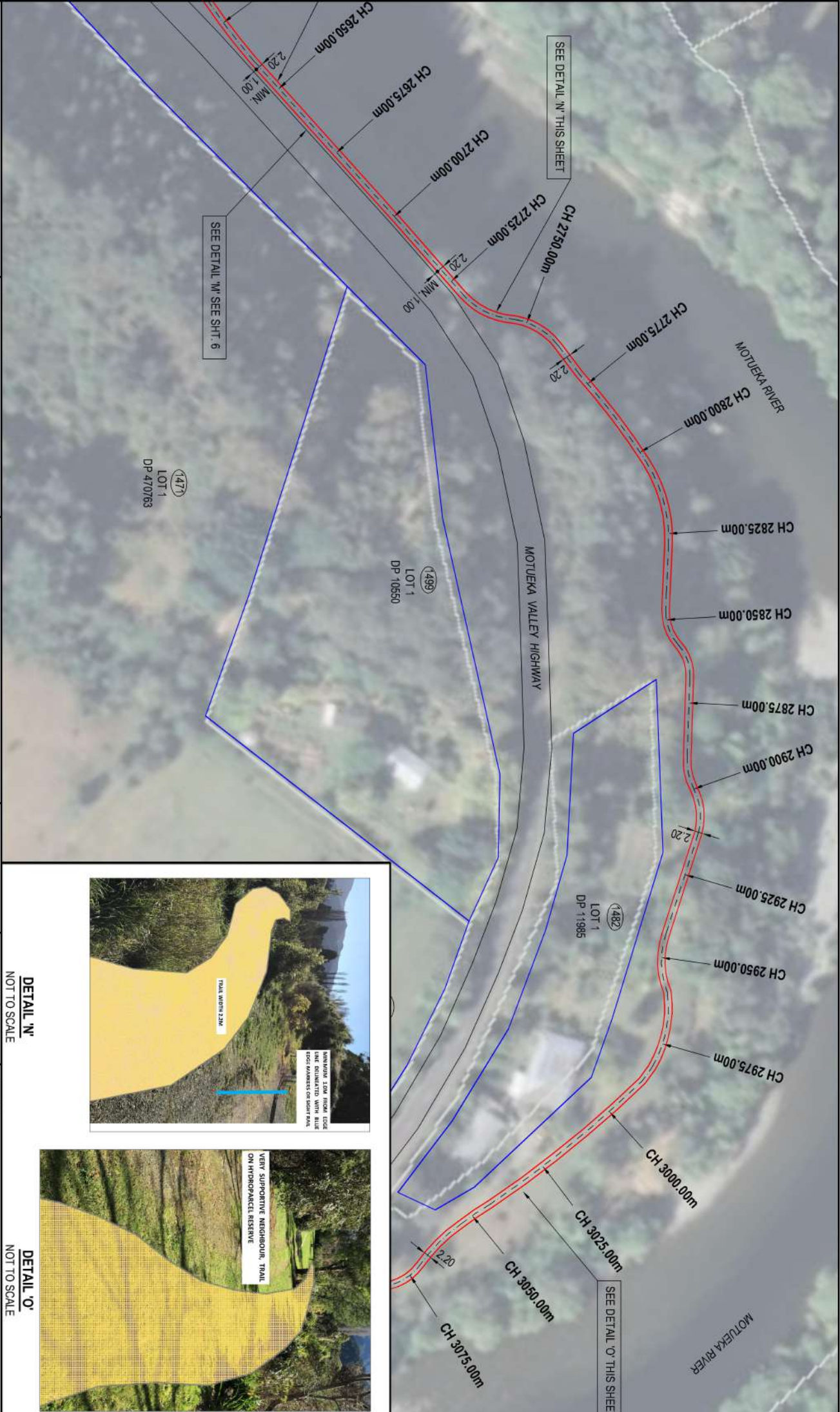


**DETAIL 'J'**  
NOT TO SCALE



**DETAIL 'K'**  
NOT TO SCALE





**tasmanian** Te Kaitiaki o Aorere  
 district council  
**te tai o Aorere**  
 APPROVED BY: \_\_\_\_\_  
 DATE: \_\_\_\_\_  
 ENGINEERING MANAGER  
 TDC CONTRACT NUMBER

DESIGNED BY:  
  
 Nga Haerenga  
**THE NEW ZEALAND CYCLE TRAIL**

DRAFTED BY:  
  
**Cotton & Light Ltd**  
**SURVEYORS**  
 28 Oxford Street  
 PO Box 3406  
 Richmond 7050  
 www.cottonandlight.co.nz  
 Ph: (03) 544 5470  
 Free Phone: 0800 604695  
 Email: survey@cottonandlight.co.nz

GENERAL NOTES  
 SEE ABOVE  
**DRAFT**

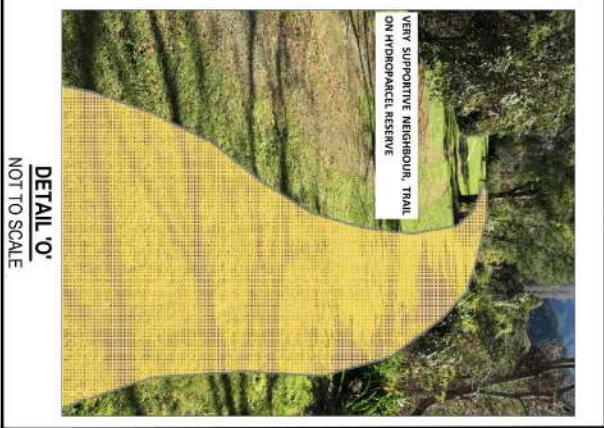


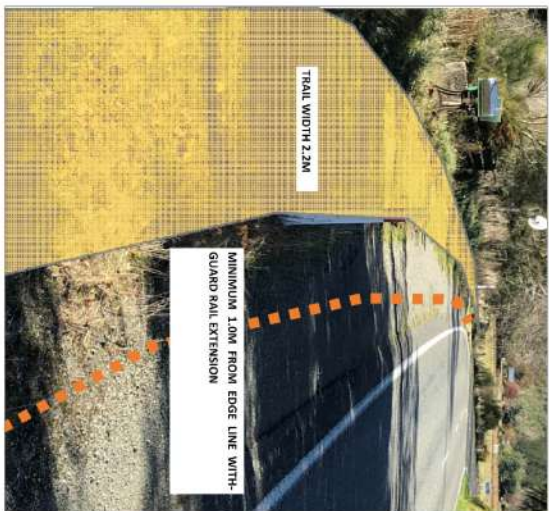
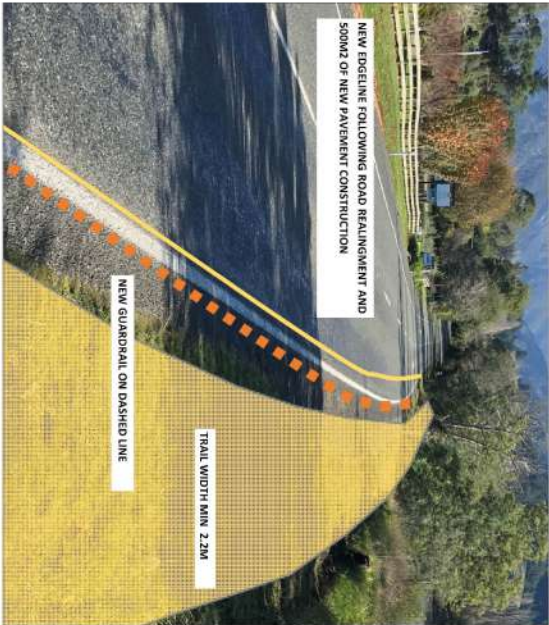
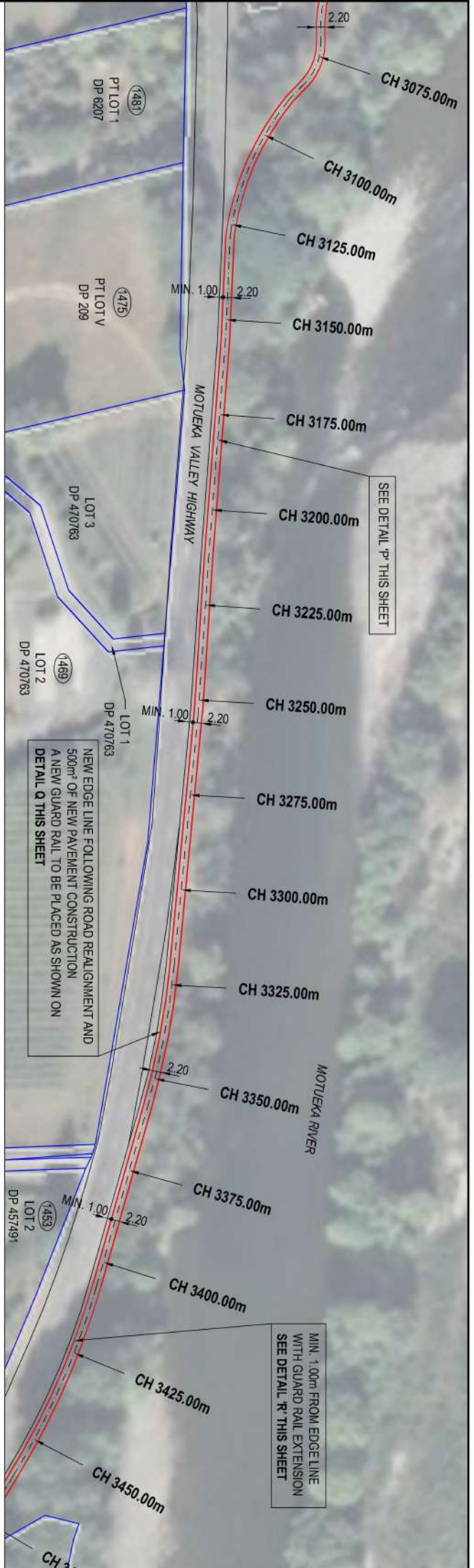
PROJECT  
**NELSON TASMAN CYCLE TRAILS TRUST**  
**GREAT TASTE TRAIL - CYCLE TRACK -**  
**POKORORO**

TITLE  
**PLAN LAYOUT FROM**  
**CH 2650.00m - CH 3075.00m**

DATE	REVISION	DES	DRN	CHD	APP	JOB No
23/06/21	CONCEPT	NR	AS			R1382

SCALE 1 : 1000  
 SHEET 7 OF 10





DETAIL 'P'  
NOT TO SCALE

DETAIL 'Q'  
NOT TO SCALE

DETAIL 'R'  
NOT TO SCALE

DESIGNED BY:

DRAFTED BY:

GENERAL NOTES

PROJECT



APPROVED BY:  
DATE:  
ENGINEERING MANAGER

28 Oxford Street  
PO Box 3406  
Richmond 7050  
www.cottonandlight.co.nz  
Ph: (03) 544 5470  
Free Phone: 0800 604695  
Email: survey@cottonandlight.co.nz

TDC CONTRACT NUMBER



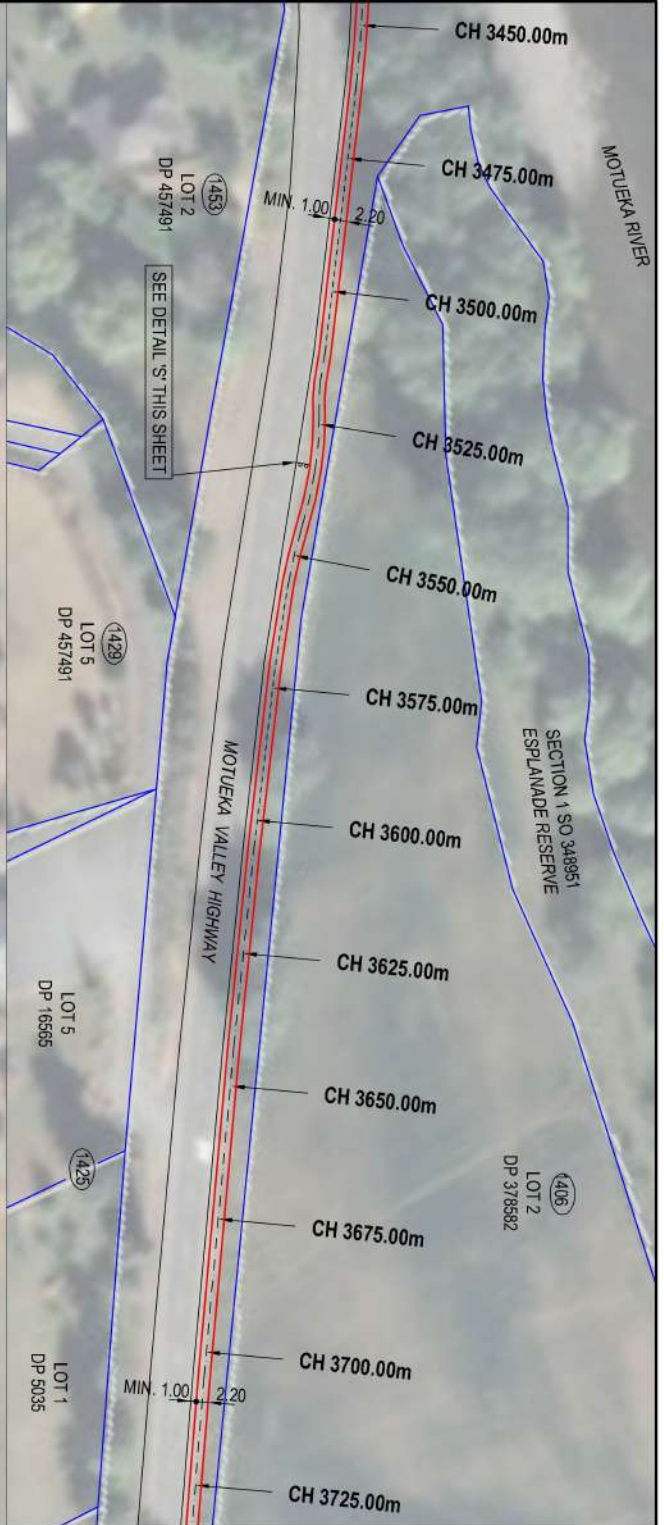
SEE ABOVE  
**DRAFT**



NELSON TASMAN CYCLE TRAILS TRUST  
GREAT TASTE TRAIL - CYCLE TRACK -  
POKORORO

TITLE	PLAN LAYOUT FROM CH 3075.00m - CH 3450.00m	SCALE	1 : 1000
DATE	23/06/21	SHEET	8 OF 10
REVISION		APPD	JOB No
DES		NR	R1382
DRN		AS	
CHD			
CONCEPT			





**DETAIL 'S'**  
NOT TO SCALE



**DETAIL 'T'**  
NOT TO SCALE

**tasmanian** Te Kaitiaki o  
district council | **te tai o Aorere**

APPROVED BY: \_\_\_\_\_  
DATE: \_\_\_\_\_ ENGINEERING MANAGER

TDC CONTRACT NUMBER \_\_\_\_\_

DESIGNED BY: \_\_\_\_\_

**THE NEW ZEALAND CYCLE TRAIL**  
Nga Haerenga

DRAFTED BY: \_\_\_\_\_

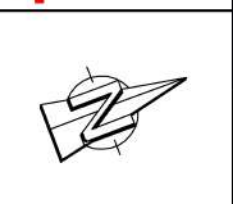
**Cotton & Light Ltd**  
**SURVEYORS**

28 Oxford Street  
PO Box 3406  
Richmond 7050  
www.cottonandlight.co.nz

PH: (03) 544 5470  
Free Phone: 0800 604695  
Email: survey@cottonandlight.co.nz

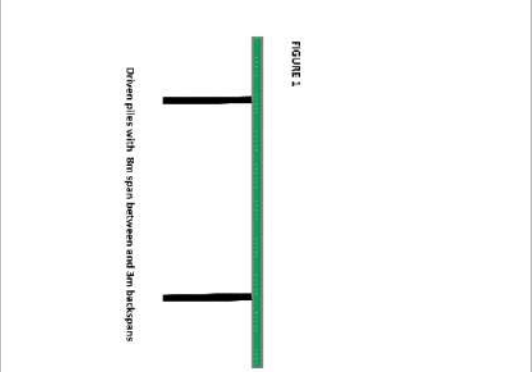
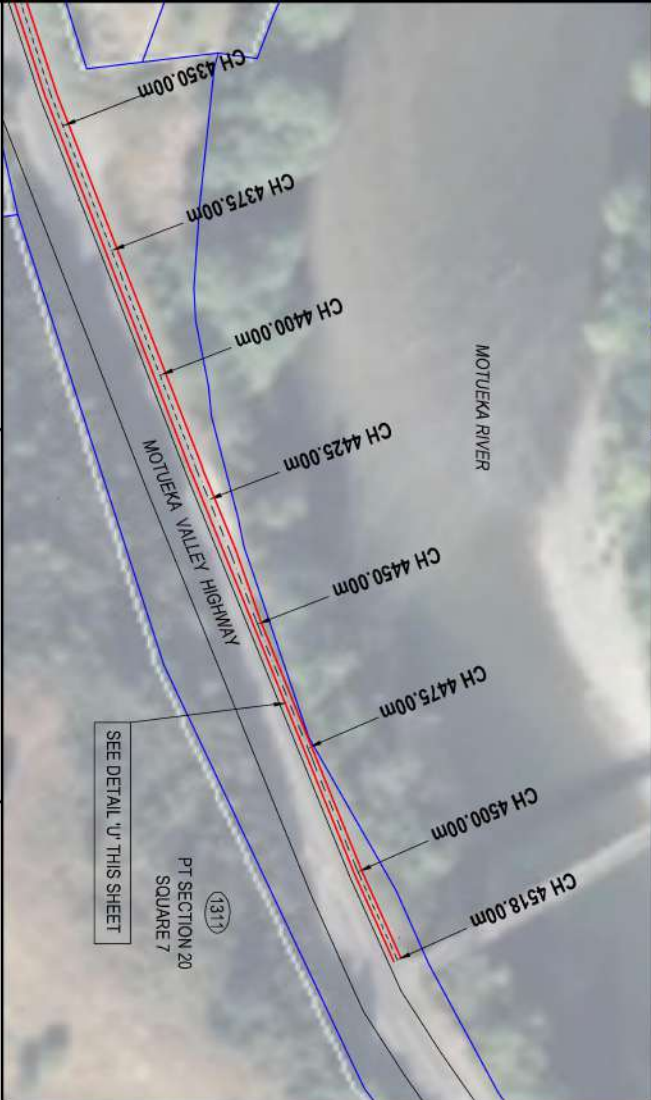
GENERAL NOTES  
SEE ABOVE

**DRAFT**



PROJECT  
**NELSON TASMAN CYCLE TRAILS TRUST  
GREAT TASTE TRAIL - CYCLE TRACK -  
POKORORO**

TITLE	PLAN LAYOUT FROM CH 3450.00m - CH 4000.00m	SCALE	1 : 1000
DATE	23/06/21	SHEET	9 OF 10
REVISION	CONCEPT	APP	JOB No
DES	NR	DRN	AS
CHD		APD	R1382



**DETAIL 'U'**  
NOT TO SCALE


  
 APPROVED BY: \_\_\_\_\_
   
 DATE: \_\_\_\_\_
   
 ENGINEERING MANAGER: \_\_\_\_\_
   
 TDC CONTRACT NUMBER: \_\_\_\_\_

DESIGNED BY: \_\_\_\_\_
   

  
 THE NEW ZEALAND CYCLE TRAIL

DRAFTED BY: \_\_\_\_\_
   

  
 28 Oxford Street  
 PO Box 3406  
 Richmond 7050  
 www.cottonandlight.co.nz
   
 Ph: (03) 544 5470  
 Free Phone: 0800 604065  
 Email: survey@cottonandlight.co.nz

GENERAL NOTES  
 SEE ABOVE  
**DRAFT**



PROJECT: NELSON TASMAN CYCLE TRAILS TRUST  
GREAT TASTE TRAIL - CYCLE TRACK - POKORORO

DATE	REVISION	DES	DRN	CHD	APD	JOB No
23/06/21	CONCEPT	NR	AS			R1382

TITLE: PLAN LAYOUT FROM CH 4000.00m - CH 4518.00m

SCALE: 1 : 1000

SHEET: 10 OF 10